

IFF MA15/ EN MAGNETIC PARTICLE TESTING (MT), LEVEL 1, EXAMINATION



TARGET AUDIENCE

Operators / Non-Destructive Testing Managers.



GOALS

Understand the purposes of Non-Destructive Testing and know how to carry out a magnetic particle test of an axle.



PREREQUISITES

Visual acuity verified, have a minimum of 3 months experience in the running gear activity;
Have followed IFF MA01 "Basic technology of running gear" training.

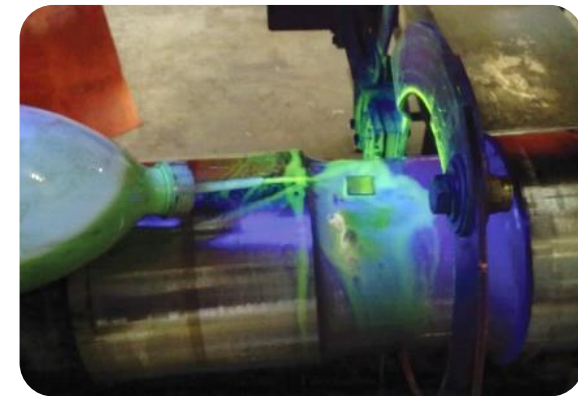


EDUCATIONAL MODALITIES

Training combining theory and practice in a workshop equipped with several magnetic particle test stands with axles with characteristic defects. All standard equipment and devices will be used during the training.



DURATION: 4,5 Days



PROGRAM

- Understand the purposes of Non-Destructive Testing and more generally the purposes of rolling stock maintenance;
- Understand the notions of magnetism, know the different ways of creating a magnetic field, know how to characterize this field;
- Implement all the operations to carry out the magnetic particle inspection of the axles;
- Perform a magnetic particle test of an axle;
- Check, adjust, calibrate the devices and perform the tests according to the rules of use (lighting, checking liquors, surface conditions, field intensity, etc.);
- Magnetic particle examination of an axle shaft or wheel, and detection of axle faults regardless of position;
- Interpret, evaluate the results and record the survey sheets (fault reports);
- Apply the health and safety rules related to the risks inherent to the equipment and products used.

• **Level 2 assessment:** Skills assessment acquired at the end of training ➔ **Yes**